

# CKE2500

**Max. Lifting Capacity: 250 t**  
**Max. Boom Length: 91.4 m**  
**Max. Jib Combination: 76.2 + 30.5 m**  
**Max. Luffing Jib Combination: 51.8 + 61.0 m**

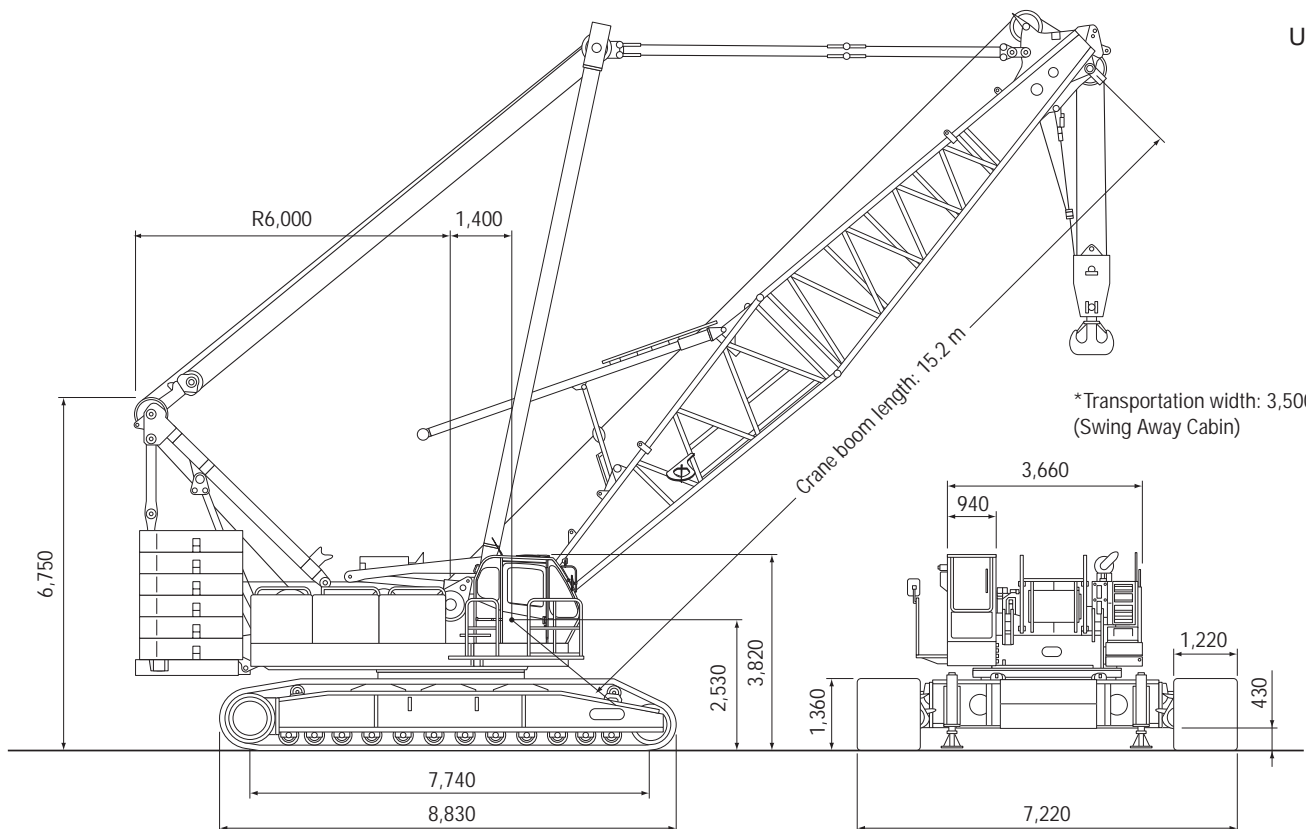
**S P E C I F I C A T I O N S**

Main Boom	
Max. Lifting Capacity	250 t/4.0 m
Max. Length	91.4 m
Fixed Jib	
Max. Lifting Capacity	26.8 t/9.8 m
Max. Combination	76.2 m + 30.5 m
Luffing Jib	
Max. Lifting Capacity	70 t/9.8 m
Max. Combination	61.0m + 51.8 m, 51.8 m + 61.0 m
Luffing Angle	63° ~ 88°
Main & Aux. Winch	
Max. Line Speed	110 m/min (1st layer)
Rated Line Pull	132 kN (13.5 tf)
Max. Line Pull	245 kN (25 tf)
Wire Rope	25 mm
Wire Rope Length	480 m (Main) 385 m (Aux.)
Brake Type	Wet-type multiple disc brake
Free-Fall	Option

Working Speed	
Swing Speed	2.1 min <sup>-1</sup> (rpm)
Travel Speed	1.1/0.7 km/h
Power Plant	
Model	Mitsubishi 6D24-TLU2D
Engine Output	235 kW/2,000 min <sup>-1</sup> (rpm)
Fuel Tank Capacity	400 liters
Hydraulic System	
Main Pumps	4 variable displacement
Max. Pressure	30.9 MPa (315 kgf/cm <sup>2</sup> )
Hydraulic Tank Capacity	550 liters
Self-Erection Device	
	Standard
Weight	
Operating Weight	Approx. 208 t
Counterweight	80.6 t (Upper), 20.0 t (Lower)
Transport Weight	44.9 t (Main machine)
Ground Pressure	95 kPa (0.97 kgf/cm <sup>2</sup> )

**GENERAL DIMENSIONS**

Unit: mm



# MAIN BOOM LIFTING CAPACITY

Rated loads in metric tons for 360° working area (Counterweight: 80.6 t, Carbody weight: 20.0 t)

Crawlers fully extended

Boom length m (ft)	15.2 (50)	18.3 (60)	21.3 (70)	24.4 (80)	27.4 (90)	30.5 (100)	33.5 (110)	36.6 (120)	39.6 (130)	42.7 (140)	45.7 (150)	48.8 (160)	51.8 (170)	54.9 (180)	57.9 (190)	61.0 (200)	64.0 (210)	67.1 (220)	70.1 (230)	73.2 (240)	76.2 (250)	79.2 (260)	82.3 (270)	85.3 (280)	88.4 (290)	91.4 (300)												
4.0	4.0/250.0	4.7/208.5																																				
5.0	199.7	199.7	5.2/188.4	5.6/176.4																																		
6.0	167.7	167.7	167.7	166.7	6.1/159.9	6.6/148.1																																
7.0	144.2	144.2	144.2	144.2	143.2	141.3	7.1/139.4	7.5/130.3																														
8.0	127.2	127.2	127.2	126.2	126.2	126.2	124.4	124.3	8.0/122.9	8.5/109.2																												
9.0	112.2	112.2	113.2	113.2	112.2	111.2	111.0	110.8	109.0	105.9	9.0/103.0	9.5/95.1	9.9/88.6																									
10.0	101.3	101.2	101.2	101.2	101.2	100.2	100.0	99.8	97.3	94.7	92.3	90.0	87.6	10.4/82.7	10.9/77.1	11.4/72.0	11.8/67.6																					
12.0	83.7	83.7	83.7	83.7	83.7	83.7	83.4	81.7	79.7	77.8	76.0	74.4	72.5	71.0	69.3	68.0	66.4	12.3/63.5	12.8/59.8	13.3/56.4	13.7/53.5																	
14.0	69.7	69.7	69.7	69.7	69.7	69.7	69.7	68.8	67.3	65.8	64.3	63.0	61.6	60.4	59.0	57.9	56.6	55.4	54.3	53.2	52.2	14.2/50.4	14.7/47.7	15.2/45.2	15.7/38.9													
16.0	14.8/65.7	60.7	59.7	59.2	59.2	59.0	59.0	58.0	56.7	55.5	54.5	53.2	52.2	51.0	50.2	49.1	48.1	47.2	46.3	45.4	44.5	44.5	43.5	42.6	42.6	38.2	16.1/34.9											
18.0		17.5/54.1	50.7	50.7	50.7	50.7	50.3	50.3	50.0	49.7	48.6	47.8	46.7	45.8	44.8	44.1	43.1	42.2	41.4	40.7	39.9	39.1	38.2	37.5	34.8	31.9												
20.0			45.0	44.7	44.3	44.0	43.6	43.6	43.3	43.0	42.8	42.4	41.4	40.6	39.7	39.1	38.3	37.4	36.8	36.1	35.4	34.7	33.9	33.2	31.8	29.1												
22.0			20.1/44.7	39.5	39.1	38.8	38.4	38.4	38.1	37.8	37.5	37.3	37.0	36.4	35.5	35.0	34.2	33.5	32.9	32.2	31.7	31.0	30.2	29.6	28.9	26.6												
24.0				22.7/37.9	34.9	34.6	34.1	34.1	33.8	33.5	33.2	33.1	32.7	32.5	32.0	31.6	30.8	30.1	29.6	29.0	28.5	27.8	27.1	26.6	25.9	24.5												
26.0					25.4/32.5	31.1	30.7	30.7	30.3	30.0	29.7	29.6	29.2	29.0	28.7	28.6	27.9	27.3	26.7	26.2	25.8	25.1	24.5	24.0	23.3	22.5												
28.0						28.0/28.2	27.8	27.7	27.4	27.1	26.8	26.6	26.3	26.1	25.7	25.7	25.3	24.8	24.3	23.8	23.4	22.8	22.2	21.7	21.1	20.5												
30.0							25.3	25.3	24.9	24.6	24.3	24.1	23.8	23.6	23.2	23.1	22.8	22.5	22.2	21.7	21.3	20.8	20.2	19.7	19.1	18.6												
32.0								30.7/24.6	23.1	22.8	22.4	22.1	22.0	21.6	21.4	21.0	20.6	20.3	20.1	19.9	19.5	18.9	18.4	17.9	17.4	16.9												
34.0									33.3/22.0	20.9	20.6	20.3	20.1	19.7	19.5	19.1	18.7	18.4	18.2	18.0	17.8	17.3	16.8	16.4	15.8	15.3												
36.0										35.9/19.4	19.0	18.7	18.5	18.1	17.9	17.5	17.4	17.1	16.8	16.6	16.4	16.2	15.9	15.3	14.9	14.4	13.9											
38.0											17.6	17.2	17.1	16.7	16.4	16.1	16.0	15.6	15.3	15.1	14.9	14.7	14.5	14.0	13.7	13.2	12.7											
40.0												16.0	15.8	15.4	15.2	14.8	14.7	14.3	14.0	13.8	13.6	13.4	13.2	12.8	12.5	12.0	11.5											
42.0													14.7	14.3	14.0	13.6	13.5	13.2	12.9	12.6	12.5	12.3	12.0	11.6	11.4	11.0	10.5											
44.0														43.8/13.7	13.2	13.0	12.6	12.5	12.1	11.8	11.6	11.4	11.2	10.9	10.6	10.4	10.0	9.6										
46.0															12.3	12.1	11.7	11.6	11.2	10.9	10.7	10.5	10.3	10.0	9.6	9.4	9.1	8.7										
48.0																46.5/12.1	11.2	10.8	10.7	10.3	10.0	9.8	9.6	9.4	9.1	8.8	8.6	8.2	7.9									
50.0																	49.1/10.8	10.1	9.9	9.6	9.3	9.0	8.8	8.6	8.3	8.0	7.8	7.4	7.1									
52.0																		51.8/9.5	9.2	8.9	8.6	8.3	8.1	7.9	7.6	7.2	7.0	6.7	6.4									
54.0																			8.6	8.2	7.9	7.6	7.4	7.2	6.9	6.6	6.4	6.0	5.7									
56.0																				54.4/8.5	7.6	7.3	7.0	6.8	6.6	6.3	6.0	5.4	5.1									
58.0																					57.0/7.4	6.8	6.5	6.3	6.0	5.7	5.4	5.2	4.8	4.6								
60.0																						59.7/6.3	6.0	5.8	5.5	5.2	4.9	4.7	4.3	4.0								
62.0																							5.5	5.3	5.0	4.7	4.4	4.2	3.8	3.5								
64.0																								62.3/5.4	4.8	4.6	4.3	3.9	3.7	3.4	3.1							
66.0																									65.0/4.6	4.1	3.8	3.5	3.3	2.9	2.6							
68.0																										67.6/3.8	3.5	3.1	2.9	2.5	2.2							
70.0																											3.1	2.7	2.5	2.2	1.9							
72.0																												2.4	2.2	1.8	1.5							
74.0																													70.2/3.1	2.4	2.2	1.8	1.5					
76.0																														72.9/2.2	1.9	1.5	1.2					
78.0																															75.5/1.6	1.2	0.9	0.9				
80.0																																	78.2/0.9					

- Note: 1. Rating according to DIN 15018-3 and prEN 13300.
- 2. Rating shown in   are determined by the strength of the boom or other structural components.
- 3. Instruction in the operator's manual must be strictly observed when operating the machine.

## FIXED JIB LIFTING CAPACITY

(counterweight: 80.6 t, carbodyweight: 20.0 t, without main hook)

Jib Offset Angle: 10°

Boom length	27.4 m		51.8 m		76.2 m		
	Jib length	12.2 m	30.5 m	12.2 m	30.5 m	12.2 m	30.5 m
9.0 m	9.8 m/26.8						
10.0 m	26.8						
12.0 m	25.5		13.6 m/26.8				
14.0 m	24.3		26.8				
16.0 m	23.0	16.0 m/6.9	25.9		17.4 m/26.8		
18.0 m	21.8	6.5	25.1	19.8 m/6.9	26.7		
20.0 m	20.7	6.2	24.4	6.9	26.1		
22.0 m	19.8	5.9	23.5	6.6	25.5	23.6 m/6.8	
24.0 m	18.9	5.6	22.8	6.3	24.9	6.8	
26.0 m	18.1	5.3	22.1	6.1	24.4	6.6	
28.0 m	17.3	5.1	21.5	5.9	23.9	6.4	
30.0 m	16.7	4.9	20.9	5.7	21.7	6.2	
34.0 m	15.5	4.5	19.7	5.3	18.3	5.9	
38.0 m	37.1 m/14.5	4.1	17.7	5.0	15.5	5.6	
42.0 m		3.8	15.2	4.7	13.0	5.3	
46.0 m		3.5	13.1	4.4	10.9	5.0	
50.0 m		3.2	11.4	4.1	9.2	4.8	
54.0 m		3.0	10.0	3.9	7.8	4.5	
58.0 m		54.6 m/3.0	8.8	3.7	6.5	4.3	
62.0 m			58.3 m/8.7	3.5	5.5	4.1	
66.0 m				3.3	4.6	3.9	
70.0 m				3.2	3.7	3.8	
74.0 m				3.0	3.0	3.6	
78.0 m				75.7 m/3.0	2.4	3.5	
82.0 m					79.3 m/2.2	3.0	
86.0 m						2.5	
90.0 m						2.0	
94.0 m						1.5	
98.0 m						96.8 m/1.2	

Jib Offset Angle: 30°

Boom length	27.4 m		51.8 m		76.2 m		
	Jib length	12.2 m	30.5 m	12.2 m	30.5 m	12.2 m	30.5 m
12.0 m	13.5 m/19.5						
14.0 m	19.3						
16.0 m	18.7		17.3 m/19.4				
18.0 m	17.9		19.3				
20.0 m	16.8		18.9		21.1 m/19.3		
22.0 m	15.9		18.5		19.2		
24.0 m	15.2	25.3 m/4.2	18.0		18.9		
26.0 m	14.5	4.1	17.3		18.7		
28.0 m	13.9	4.0	16.7	29.1 m/4.2	18.4		
30.0 m	13.4	3.8	16.2	4.1	18.0	32.9 m/4.1	
34.0 m	12.7	3.5	15.2	3.9	17.0	4.1	
38.0 m	37.8 m/12.4	3.3	14.4	3.7	16.2	3.9	
42.							



# BOOM & JIB ARRANGEMENT

## CRANE BOOM ARRANGEMENT

Boom length m (ft)	Boom arrangement
15.2 (50)	Base-Tip
18.3 (60)	Base-A-Tip
21.3 (70)	Base-A-A-Tip, Base-B-Tip
24.4 (80)	Base-A-B-Tip
27.4 (90)	Base-A-A-B-Tip, Base-D-Tip, Base-B-B-Tip
30.5 (100)	Base-A-B-B-Tip, Base-A-D-Tip
33.5 (110)	Base-A-A-B-B-Tip, Base-A-A-D-Tip, Base-B-D-Tip
36.6 (120)	Base-A-B-D-Tip
39.6 (130)	Base-A-A-B-D-Tip, Base-D-D-Tip, Base-B-B-D-Tip
42.7 (140)	Base-A-B-B-D-Tip, Base-A-D-D-Tip
45.7 (150)	Base-A-A-B-B-D-Tip, Base-A-A-D-D-Tip, Base-B-D-D-Tip
48.8 (160)	Base-A-B-D-D-Tip
51.8 (170)	Base-A-A-B-D-D-Tip, Base-B-B-D-D-Tip, Base-D-D-D-Tip
54.9 (180)	Base-A-B-B-D-D-Tip, Base-A-D-D-D-Tip
57.9 (190)	Base-A-A-B-B-D-D-Tip, Base-A-A-D-D-D-Tip, Base-B-D-D-D-Tip
61.0 (200)	Base-A-B-D-D-D-Tip
64.0 (210)	Base-A-A-B-D-D-D-Tip, Base-B-B-D-D-D-Tip, Base-D-D-D-D-Tip
67.1 (220)	Base-A-B-B-D-D-D-Tip, Base-A-D-D-D-D-Tip
70.1 (230)	Base-A-A-B-B-D-D-D-Tip, Base-A-A-D-D-D-D-Tip, Base-B-D-D-D-D-Tip
73.2 (240)	Base-A-B-D-D-D-D-Tip
76.2 (250)	Base-A-A-B-B-D-D-D-D-Tip, Base-B-B-D-D-D-D-Tip, Base-D-D-D-D-D-Tip
79.3 (260)	Base-A-B-B-B-D-D-D-D-Tip, Base-A-D-D-D-D-D-Tip
82.3 (270)	Base-A-A-B-B-B-D-D-D-D-Tip, Base-A-A-D-D-D-D-D-Tip, Base-B-D-D-D-D-D-Tip
85.3 (280)	Base-A-B-B-B-D-D-D-D-Tip
88.4 (290)	Base-A-A-B-B-B-D-D-D-D-Tip, Base-B-B-B-D-D-D-D-Tip
91.4 (300)	Base-A-B-B-B-B-D-D-D-D-Tip

Base Boom Length and Boom Tip Length  
 Base = 7.8 m (25'), Tip = 8.3 m (27')  
 Insert Boom  
 A = 3.0 m (10'), B = 6.1 m (20'), D = 12.2 m (40')

## FIXED JIB ARRANGEMENT

Jib length m (ft)	Jib arrangement
12.2 (40)	Base-A-Tip
18.3 (60)	Base-A-B-Tip
24.4 (80)	Base-A-B-B-Tip
30.5 (100)	Base-A-B-B-B-Tip

Base Jib Length and Jib Tip Length  
 Base = 7.8 m (25'), Tip = 8.3 m (27')  
 Insert Jib  
 A = 3.0 m (10'), B = 6.1 m (20')

## LUFFING BOOM ARRANGEMENT

Boom length m (ft)	Boom arrangement
21.3 (70)	Base-A-B-Cap
24.4 (80)	Base-A-A-B-Cap, Base-B-B-Cap, Base-D-Cap
27.4 (90)	Base-A-B-B-Cap, Base-A-D-Cap
30.5 (100)	Base-A-A-B-B-Cap, Base-A-A-D-Cap, Base-B-D-Cap
33.5 (110)	Base-A-B-D-Cap
36.6 (120)	Base-A-A-B-D-Cap, Base-B-B-D-Cap, Base-D-D-Cap
39.6 (130)	Base-A-B-B-D-Cap, Base-A-D-D-Cap
42.7 (140)	Base-A-A-B-B-D-Cap, Base-A-A-D-D-Cap, Base-B-D-D-Cap
45.7 (150)	Base-A-B-D-D-Cap
48.8 (160)	Base-A-A-B-B-D-D-Cap, Base-B-B-D-D-Cap, Base-D-D-D-Cap
51.8 (170)	Base-A-B-B-B-D-D-Cap, Base-A-D-D-D-Cap
54.9 (180)	Base-A-A-B-B-B-D-D-Cap, Base-B-B-D-D-D-Cap, Base-A-A-D-D-D-Cap
57.9 (190)	Base-A-B-B-D-D-D-Cap
61.0 (200)	Base-A-A-B-B-B-D-D-D-Cap, Base-B-B-B-D-D-D-Cap

Base Boom Length and Luffing Boom Cap Length  
 Base = 7.8 m (25'), Cap = 8.3 m (27')  
 Insert Luffing Boom  
 A = 3.0 m (10'), B = 6.1 m (20'), D = 12.2 m (40')

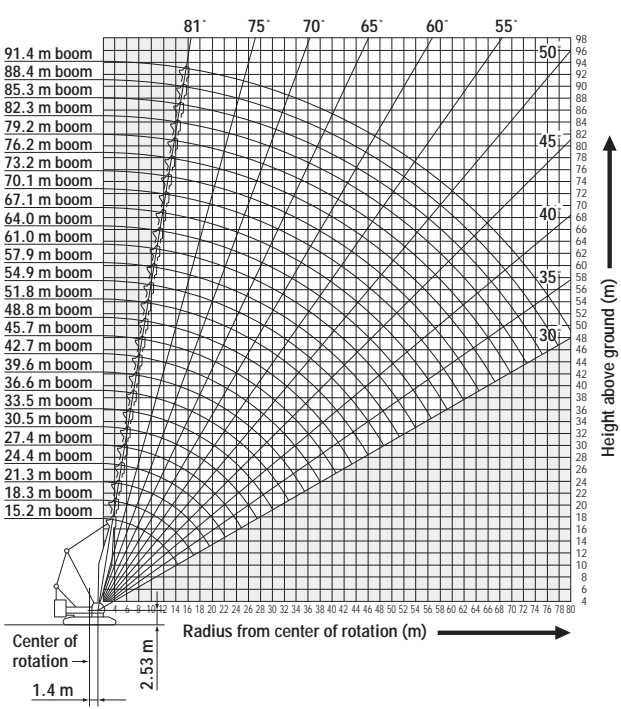
## LUFFING JIB ARRANGEMENT

Jib length m (ft)	Jib arrangement
21.3 (70)	Base-A-B-Tip
24.4 (80)	Base-A-A-B-Tip, Base-B-B-Tip, Base-D-Tip
27.4 (90)	Base-A-B-B-Tip, Base-A-D-Tip
30.5 (100)	Base-A-A-B-B-Tip, Base-B-B-Tip, Base-A-A-D-Tip
33.5 (110)	Base-A-B-D-Tip
36.6 (120)	Base-A-A-B-B-D-Tip, Base-B-B-B-D-Tip, Base-D-D-Tip
39.6 (130)	Base-A-B-B-B-D-Tip, Base-A-D-D-Tip
42.7 (140)	Base-A-A-B-B-B-D-Tip, Base-B-B-B-D-Tip, Base-A-A-D-D-Tip
45.7 (150)	Base-A-B-B-D-Tip
48.8 (160)	Base-A-A-B-B-B-D-Tip, Base-B-B-B-B-D-Tip
51.8 (170)	Base-A-B-B-B-B-D-Tip
54.9 (180)	Base-A-A-B-B-B-B-D-Tip, Base-A-A-D-D-D-Tip, Base-B-B-D-D-D-Tip
57.9 (190)	Base-A-B-B-B-B-D-Tip
61.0 (200)	Base-A-A-B-B-B-B-D-Tip

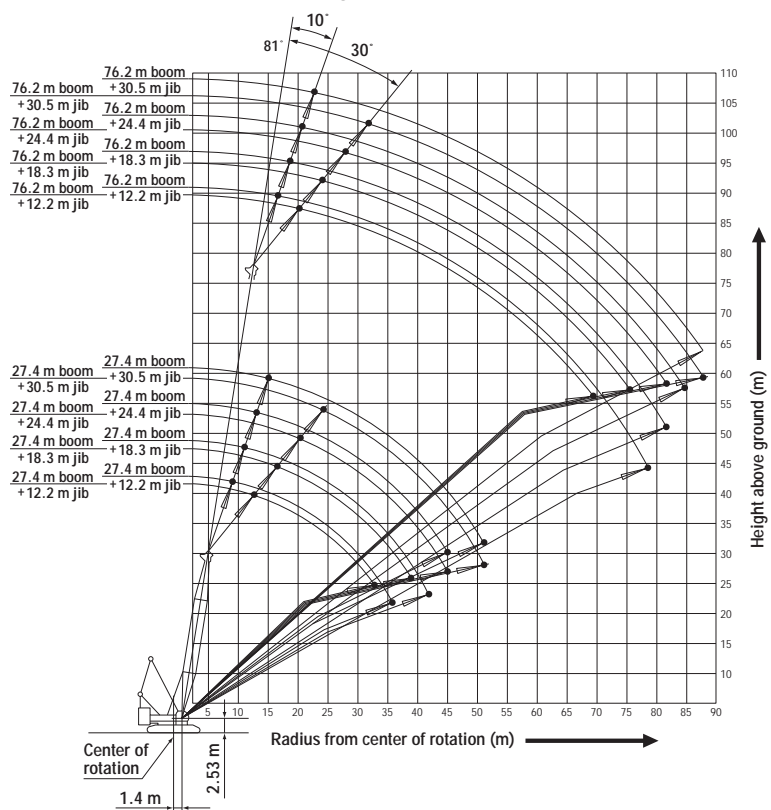
Base Luffing Jib Length and Luffing Jib Tip Length  
 Base = 7.8 m (25'), Tip = 8.3 m (27')  
 Insert Luffing Jib  
 A = 3.0 m (10'), B = 6.1 m (20'), D = 12.2 m (40')

# WORKING RADIUS

## CRANE BOOM

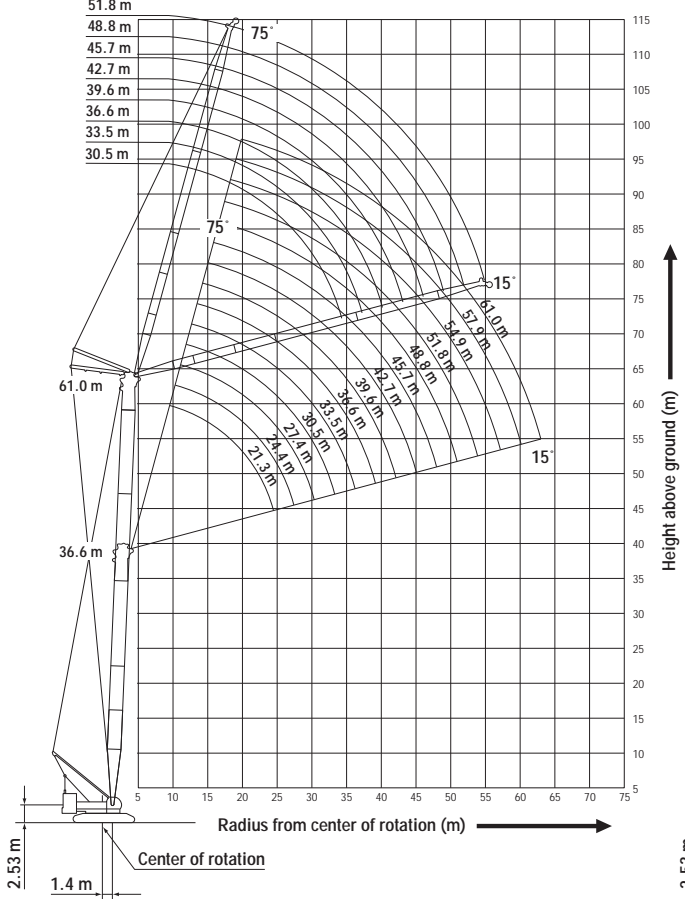


## FIXED JIB (Jib Offset Angle: 10°, 30°)

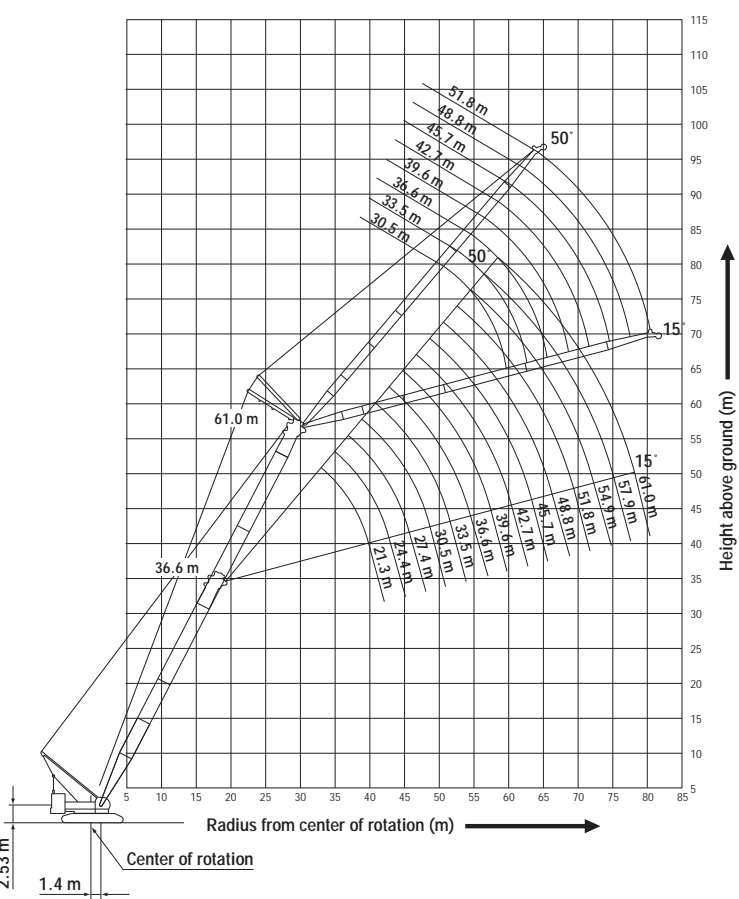


## LUFFING JIB

### Boom Angle: 88°



### Boom Angle: 63°

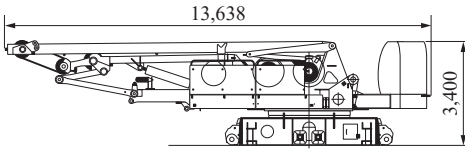


# SPECIFICATIONS OF PARTS AND ATTACHMENTS

Dimensions: mm Weight: kg

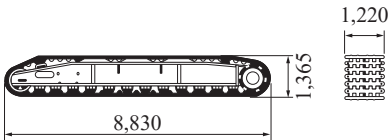
## Base Machine

Weight: 44,900 kg Width: 3,500 mm



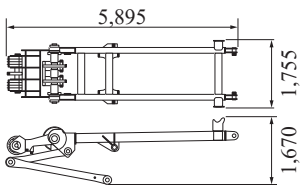
## Crawler

Weight: 23,500 kg



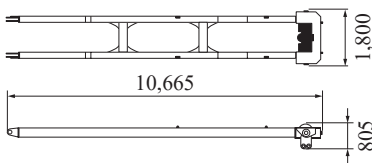
## Gantry

Weight: 2,920 kg



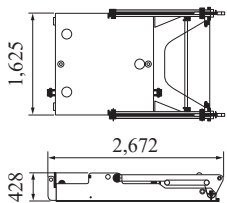
## Mast

Weight: 2,970 kg



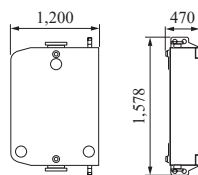
## Carbodyweight A

Weight: 4,375 kg x 2 pieces



## Carbodyweight B

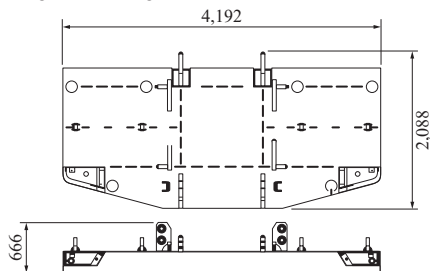
Weight: 5,625 kg x 2 pieces



## Counterweight Type 1

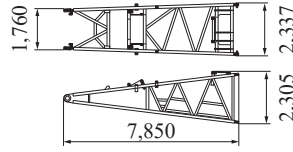
### Counterweight A

Weight: 12,500 kg



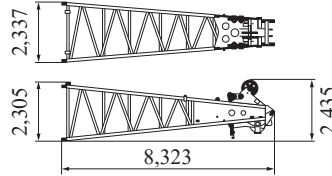
## Boom Base

Weight: 3,250 kg

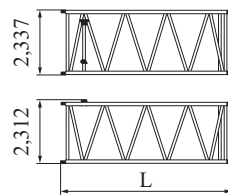


## Boom Top

Weight: 3,138 kg (with guy cables)



## Insert Boom

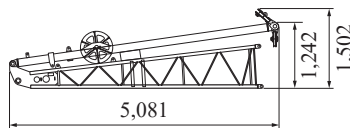


	L (mm)	Weight (kg)*
	3.0m	3,175
	6.1m	6,223
	12.2m	12,320

\*with guy cables

## Jib Base with Strut (For Crane)

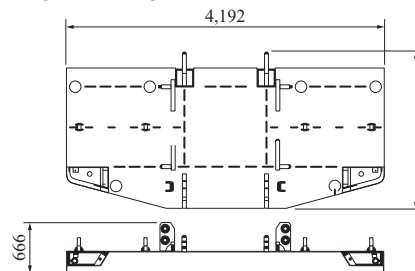
Weight: 510 kg Width: 1,040 mm



## Counterweight Type 2

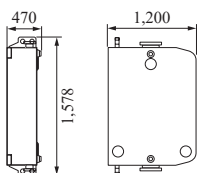
### Counterweight A

Weight: 12,506 kg



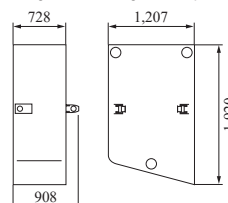
## Counterweight B, C

Weight: 5,625 kg x 6 x 2 pieces



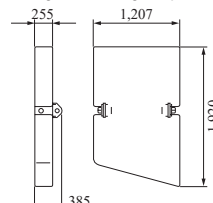
## Counterweight B, C

Weight: 10,000 kg x 3 x 2 pieces



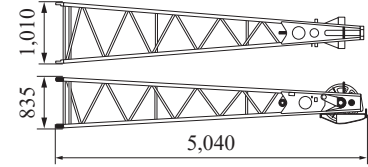
## Counterweight D, E

Weight: 3,750 kg x 2 pieces



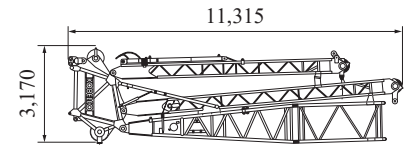
## Jib Top (For Crane)

Weight: 315 kg



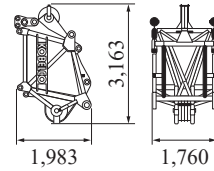
## Travel Kit Assembly

Weight: 6,000 kg



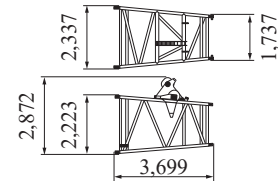
## Luffing Main Boom Top

Weight: 1,890 kg



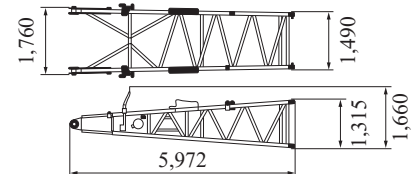
## Luffing Taper Insert Boom

Weight: 1,030 kg



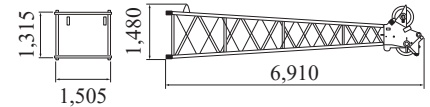
## Luffing Jib Base

Weight: 1,140 kg



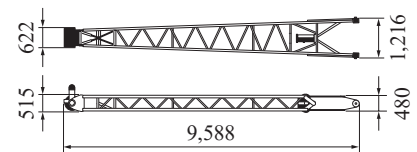
## Luffing Jib Top

Weight: 1,170 kg



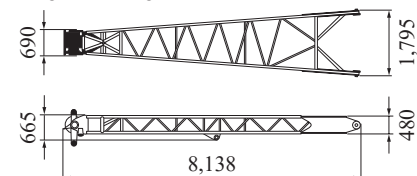
## Front Strut (Luffing Jib)

Weight: 1,160 kg



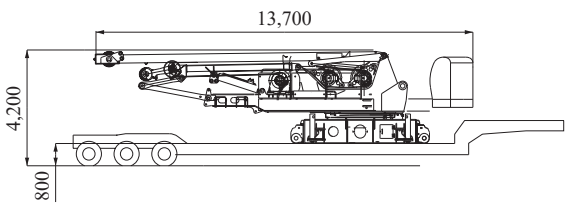
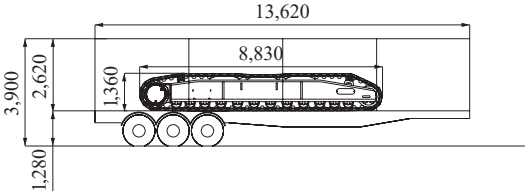
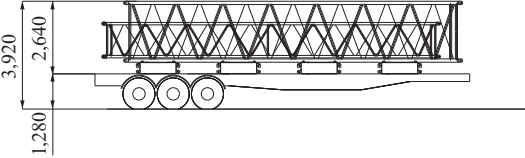
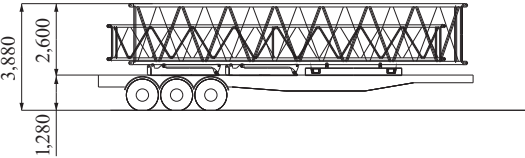
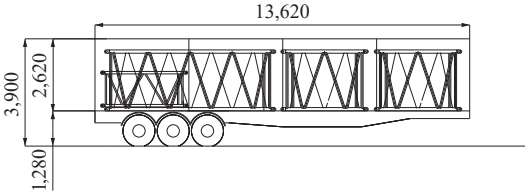
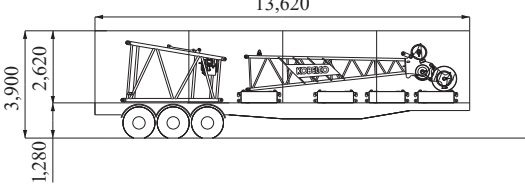
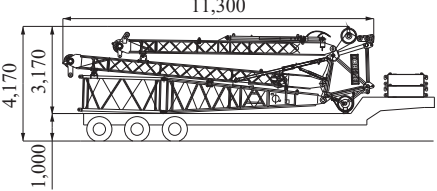
## Rear Strut (Luffing Jib)

Weight: 1,130 kg



# TRANSPORTATION PLAN

(Main Boom 61.0 m + Luffing Jib 51.8 m, Counterweight: Type 1)

Configuration	Description	Total Weight
<b>No. 1 Low Loader</b> 	Base Machine = Including 3rd winch Translifter All wire ropes	44.90 ton
<b>No. 2 &amp; No. 3 Tent Side Truck</b> 	Crawler =	23.50 ton
<b>No. 4 &amp; No. 5 Flat Bed Trailer</b> 	Counterweight (4 x 5.63 ton) = 40 ft Main Boom x 1 = 40 ft Luffing Jib x 1 = Total =	22.52 ton 2.24 ton 0.96 ton <hr/> 25.72 ton
<b>No. 6 Flat Bed Trailer</b> 	Counterweight A x 1 = 40 ft Main Boom x 1 = 20 ft Luffing Jib (2 x 0.54 ton) = Carbodyweight A (2 x 4.38 ton) = Total =	12.89 ton 2.24 ton 1.08 ton 8.76 ton <hr/> 24.97 ton
<b>No. 7 Tent Side Truck</b> 	10 ft Main Boom (2 x 0.74 ton) = 20 ft Main Boom x 1 = 10 ft Luffing Jib Insert x 1 = Total =	1.48 ton 1.29 ton 0.31 ton <hr/> 3.08 ton
<b>No. 8 Tent Side Truck</b> 	Luffing Jib Top x 1 = Luffing Taper x 1 = Counterweight (4 x 5.63 ton) = Total =	1.17 ton 1.03 ton 22.52 ton <hr/> 24.72 ton
<b>No. 9 Semi Loader</b> 	Travel Kit = Carbodyweight B (2 x 5.63 ton) = Total =	6.00 ton 11.26 ton <hr/> 17.26 ton

Note: This transport plan depends on your specification of trailer and the areas or countries where you transport.

Attachments	Weight	Dimensions (L x W x H)
Boom backstop	680 kg	7,055 mm x 997 mm
3.0 m (10 ft) Insert jib	110 kg	3,128 mm x 1,020 mm x 840 mm
6.1 m (20 ft) Insert jib	190 kg	6,175 mm x 1,020 mm x 840 mm
3.0 m (10 ft) Insert Luffing jib	310 kg	3,165 mm x 1,490 mm x 1,290 mm
6.1 m (20 ft) Insert Luffing jib	540 kg	6,210 mm x 1,490 mm x 1,290 mm
12.2 m (40 ft) Insert Luffing jib	960 kg	12,305 mm x 1,490 mm x 1,290 mm
Luffing jib backstop	180 kg	3,575 mm x 346 mm x 226 mm
Strut backstop (luffing jib)	180 kg	3,575 mm x 268 mm
Auxiliary sheave	276 kg	1,080 mm x 930 mm
Auxiliary sheave (luffing jib)	380 kg	1,012 mm x 893 mm x 914 mm
Lower spreader	700 kg	1,350 mm x 1,305 mm x 500 mm
Luffing jib drum	1,470 kg	1,696 mm x 1,040 mm x 1,063 mm
Ball hook	450 kg	1,200 mm x 380 mm dia.
35-ton hook	900 kg	1,575 mm x 365 mm x 700 mm
70-ton hook	1,200 kg	1,825 mm x 384 mm x 700 mm
100-ton hook	1,800 kg	2,025 mm x 555 mm x 700 mm
150-ton hook	2,300 kg	2,665 mm x 715 mm x 700 mm
250-ton hook	4,200 kg	2,308 mm x 1,616 mm x 720 mm

**Note:** Due to our policy of continual product improvements all designs and specifications are subject to change without advance notice.



## KOBELCO CRANES CO., LTD.

17-1, Higashigotanda 2-chome, Shinagawa-ku, Tokyo 141-8626 JAPAN  
 Tel: ++81 (0) 3-5789-2130 Fax: ++81 (0) 3-5789-3372